

# DIAPHRAGM SEAL

FLANGE-"1" SECTION TYPE



BBV



## SPECIAL FEATURES

- CONTINUOUS DUTY
- SECTION EXTENSION TO FACILITATE SMALLER FLANGED CONNECTION
- IDEAL FOR GENERAL PURPOSE APPLICATION
- IDEAL FOR GENERAL PURPOSE APPLICATION



## APPLICATIONS

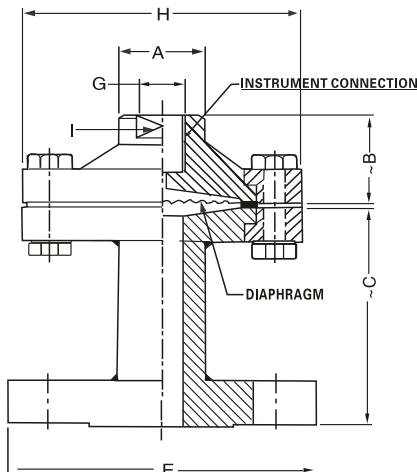
DIAPHRAGM SEALS ARE PROVIDED IN THE INSTRUMENTS LIKE PRESSURE GAUGES, SWITCHES, TRANSMITTERS IN ORDER TO ISOLATE THE SENSING ELEMENT FROM THE MAIN SERVICE DUE TO ITS CORROSIVE, VISCOUS AND SEDIMENTED NATURE AND TO AVOID CLOGGING AND SOLIDIFICATION. THIS CAN BE WIDELY USED WITH ANTI CORROSIVE TREATMENT/PROTECTION & VARIOUS FLANGED SIZES.

## SPECIFICATIONS

**STANDARD VERSION: (PREFERABLE FOR FLANGE SIZE 1/2"~2" AND BELOW)**

Range	:	-1 kg/cm <sup>2</sup> to 21 kg/cm <sup>2</sup>
Process Temperature	:	-40°C to 200°C or as per fill fluid
	:	-40°C to 345°C for without PTFE lined
Instrument Connection	:	3/8" BSP (F)
Process Connection	:	Flang (as per Din/BS/ANSI/JIS) Finish 125-250 AARH
Fill Fluid	:	Silicon Oil-DC200 upto -40 to 200°C

- Diaphragm : AISI 316L SS
- Top Chamber : AISI 304 SS
- "1" Section : AISI 316 SS Flange (as per DIN/BS/ANSI/JIS)
- (Bottom Chamber) :
- Fill Fluid :
- Gasket : Carbon Steel Nickel Plated
- Slip Ring : PTFE (upto -200°C)/Metal Seal (upto 350°C)
- (Tension Flange) : Steel chrome plated powder Coated



Ranges	A	~B	~C	E	H	G	I
-1 to 2.5 kg/cm <sup>2</sup>	30	31	75	*	90	3/8" BSP (F)	A/F 25
4 to 400 kg/cm <sup>2</sup>	30	31	75	*	60	3/8" BSP (F)	A/F 25

\*-as per standard flange table ANSI, DIN, BS, JIS ETC.,

Notes: . Drawings are not to scale. . All Dimensions are in mm.



## HOW TO ORDER

### BASIC MODEL

### OPTIONS

FOR NON STANDARD PRODUCTS/OPTIONAL ITEMS, PLEASE CONTACT FACTORY FOR DELIVERY AND MINIMUM QUANTITY OF ORDER.

### TOP CHAMBER

<b>L1</b> AISI 316L SS	<b>L2</b> AISI 316 SS
<b>L3</b> AISI 304 SS	<b>L4</b> CARBON STEEL

### DIAPHRAGM

<b>M8</b> PTFE	<b>M2</b> NICKEL	<b>M3</b> TITANIUM
<b>M4</b> HASTELLOY'C	<b>M5</b> SILVER	<b>M1</b> AISI 316L SS
<b>M6</b> MONEL'	<b>M7</b> TANTALUM	

### GASKET

<b>N3</b> METAL	<b>N4</b> PTFE
-----------------	----------------

### TENSION FLANGE & NUT -BOLTS

<b>AC1</b> AISI 304SS	<b>AC2</b> NICKEL PLATED MILD STEEL
<b>AC3</b> AISI 316 SS	

### FLUSHING RING

<b>S1</b> FLUSHING RING WITH 1/2"NPT PLUG (AISI 304 SS)	<b>S2</b> FLUSHING RING WITH 1/4"NPT PLUG(AIS 304 SS)
<b>S3</b> FLUSHING RING WITH 1/2" NPT PLUG (AISI 316SS)	<b>S4</b> FLUSHING RING WITH 1/4"NPT plug (AISI 316 SS)Std.

### BOTTOM CHAMBER(I SECTION)

<b>P2</b> AISI 304 SS	<b>P3</b> CARBON STEEL	<b>P4</b> PVC	<b>P1</b> AISI 316 SS
<b>P5</b> AISI 3161 SS	<b>P6</b> POLYPROPELENE	<b>P7</b> PVDF	

### INSTRUMENT CONNECTION

<b>Q1</b> 1/2"BSP(F)	<b>Q5</b> 3/8"BSP(F)
<b>Q2</b> 1/4"NPT(F)	<b>Q7</b> 1/2"NPT(F)
<b>Q3</b> 1/4"BSP(F)	<b>Q6</b> 3/8"NPT(F)

### PROCESS CONNECTION

AS PER DIN /BS/ANSI/JIS(SELECT CODE FROM TABLE)

<b>T1</b> FLUROLUBE 4.2[-45 TO 175°C/-49 TO374 ° F]	<b>T2</b> SILICON DC 704 [0 TO 315°C/-32 TO599 ° F]
<b>T3</b> FLUROLUBE 6.3[-40 TO 235°C/-40 TO455 ° F]	<b>T4</b> SILICON DC 710 [5TO 345°C/-41 TO653 ° F]
<b>T5</b> FLUROLUBE FS5[-40 TO 150°C/-40 TO302 ° F]	<b>T6</b> SYLTHERM 800 [-45 TO205°C/-49 TO401° F]
<b>T7</b> FOOD GRADE OIL[-20 TO 140°C/-4 TO284 ° F]	<b>T8</b> SYLTHERM XLT [-75 TO150°C/-102TO302° F]
<b>T9</b> SILICON DC200-10CS[-40 TO 205°C/-40 TO401 ° F]	<b>T10</b> HALOCARBON OIL

### PROTECTION ON WETTED PARTS

<b>U1</b> PTFE LINING ON BOTTOM CHAMBER(ISECTION)-3mm THICK	<b>U2</b> PTFE PROTECTION FOR DIAPHRAGM
	<b>U3</b> PTFE COATING ON DIAPHRAGM

### TYPE

<b>G1</b> WITHOUT CAPILLARY	<b>G2</b> WITH CAPILLARY
-----------------------------	--------------------------

### CAPILLARY

<b>H1</b> AISI 304 SS	<b>H2</b> WITH CAPILLARY
-----------------------	--------------------------

### CAPILLARY COVERED WITH ARMOUR

<b>I1</b> AISI 304 SS	<b>I2</b> AISI 316 SS	<b>I3</b> PVC
-----------------------	-----------------------	---------------

### CAPILLARY LENGTH(Max up to 6Mtrs.)

IN METERS (e.g. 1.5)=1.5METERS 2.0=2METERS)

### OTHER OPTIONS

<b>K3</b> HELIUM LEAK TEST	<b>K4</b> DRY SEAL ONLY WITHOUT INSTRUMENT
----------------------------	--

### Ordering Example:

**BBV-L1-M8-N3-AC1-S1-P2-Q1-B11-T1-U1-G1-H1-I1-3Mtr.-K3**

Note: ● Due to continuous improvement,the specification may vary from time to time.

BBV

L1

M8

N3

AC1

S1

P2

Q1

B11

T1

U1

G1

H1

I1

3Mtr.

K3