

# DIAPHRAGM SEAL

## EXTENDED NECK TYPE

BBY



### SPECIAL FEATURES

- SUITABLE FOR SLURRY/VISCOUS FLUIDS
- CONTINUOUS DUTY
- WELDED DIAPHRAGM
- FLANGED CONNECTION

### APPLICATIONS

DIAPHRAGM SEALS ARE PROVIDED IN THE INSTRUMENTS LIKE PRESSURE GAUGES, SWITCHES, TRANSMITTERS IN ORDER TO ISOLATE THE SENSING ELEMENT FROM THE MAIN SERVICE DUE TO ITS CORROSIVE, VISCOUS AND SEDIMENTED NATURE AND TO AVOID CLOGGING AND SOLIDIFICATION.

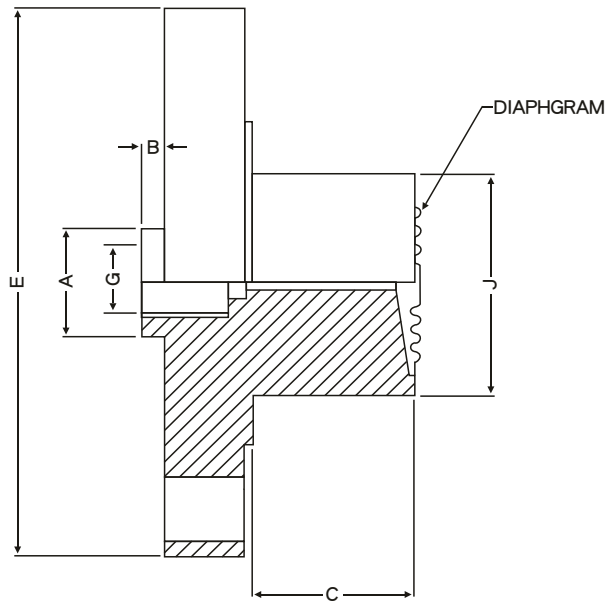


### SPECIFICATIONS

#### STANDARD VERSION

Range	:	1kg/cm <sup>2</sup> to 60kg/cm <sup>2</sup>
Process Temperature	:	-40°C to 200°C or as per fill fluid
Instrument Connection	:	3/8" BSP (F)
Process Connection	:	Flange(as per DIN/BS/ANS/JIS)Finish 125-250 AARN 40NB(1 1/2") to 80NB(3")(as required)

Diaphragm	:	AISI 316L SS
Body	:	AISI 316 SS
Extension	:	50mm(other extension on request)
Fill Fluid	:	Silicon Oil-DC-200



A	B	~C	E	G	J
30	8	*	**	3/8"BSP(F)	***

\*AS REQUIRED BY CUSTOMER  
 \*\* as per standard flange table ANSI, DIN, BS, JIS Etc.  
 \*\*\* DIAPHRAGM SUITABLE FOR FLANGE RF AND RANGE

Notes: • Drawings are not to scale. • All Dimensions are in mm.

## FLANGE CONNECTION CODES

### AS PER DIN 2527

DN	PN	CODE
40	6	A41
	10	A42
	16	A43
	25	A44
	40	A45
	64	A46
	100	A47
	160	A48
	250	A49
400	A50	
50	6	A51
	10	A52
	16	A53
	25	A54
	40	A55
	64	A56
	100	A57
	160	A58
	250	A59
	400	A60

DN	PN	CODE
65	6	A61
	10	A62
	16	A63
	25	A64
	40	A65
	64	A66
	100	A67
	160	A68
	250	A69
400	A70	
80	6	A71
	10	A72
	16	A73
	25	A74
	40	A75
	64	A76
	100	A77
	160	A78
	250	A79
	400	A80

### AS PER BS – 10

NOMINAL SIZE	TABLE	CODE
1 1/2"	D	C09
	E	C10
	F	C11
	H	C12
	J	C13
	K	C14
2"	D	C15
	E	C16
	F	C17
	H	C18
	J	C19
	K	C20

NOMINAL SIZE	TABLE	CODE
2 1/2"	D	C21
	E	C22
	F	C23
	H	C24
	J	C25
3"	K	C26
	D	C27
	E	C28
	F	C29
	H	C30
	J	C31
	K	C32

## HOW TO ORDER

### BASIC MODEL

BBY

### OPTIONS

FOR NON STANDARD PRODUCTS/OPTIONAL , PLEASE CONTACT FACTORYFOR DELIVERYAND MINIMUM QUANTITYOF ORDER.

### INSTRUMENT CONNECTION

Q2

Q2 1/4" BSP	Q3 1/4" NPT	Q1 1/2" BSP
Q6 3/8" BS(F)	Q5 3/8" NPT	Q4 1/2" NPT

### DIAPHRAGM MATERIAL

AH1

AH1 AISI 316SS	AH2 SILVER
AH3 HASTELLOY' C'	AH4 TANTALUM
AH5 MONEL	AH6 TITANIUM
AH7 NICKEL	

### PROCESS CONNECTION

B54

AS PER DIN/ BS /ANSI /JIS (SELECTCODE FROM TABLE)

### BODY

AF4

AF4 AISI SS316L	AF5 HASTELLOY' G'	AF6 TITANIUM
AF3 AISI SS316	AF7 MONEL	

### FILLING FLUIDS

T9

T9 SILICON DC200-10CS [-40 TO 205°C / -40 TO 401°F]  
 T2 SILICON DC 704 [0 TO 315°C / 32 TO 599°F]  
 T4 SILICON DC 710 [5 TO 345°C / 41 TO 653°F]  
 T6 SYL THERM 800 [-45 TO 205°C / -49 TO 401°F]  
 T8 SYL THERM XLT [-75 TO 150°C / -102 TO 302°F]  
 T1 FLUROLUBE 4.2 [-45 TO 175°C / -49 TO 374°F]  
 T3 FLUROLUBE 6.3 [-40 TO 235°C / -40 TO 455°F]  
 T5 FLUROLUBE FS5 [-40 TO 150°C / -40 TO 302°F]  
 T7 FOOD GRADE OIL [-20 TO 140°C / -4 TO 284°F]  
 T10 HALOCARBON OIL

### PROTECTION ON WETTED PARTS

U3

U3 PTFE PROTECTION FOR DIAPHRAGM

### TYPE

G1

G1 WITHOUT CAPILLARY G2 WITH CAPILLARY

### CAPILLARY

H1

H1 AISI 304SS H2 AISI 316SS

### CAPILLARY COVERED WITH ARMOUR

I1

I1 AISI 304SS I2 AISI 316SS I3 PVC

### CAPILLARY LENGTH(Max up to 6Mtrs.)

3M tr.

IN METERS (e.g. 1.5= 1.5 METERS 2.0= METERS)

### OTHER OPTIONS

K3

K3 HELIUM LEAK TEST K4 DRY SEAL ONLY WITHOUT INSTRUMENT

Ordering Example:

**BBY-Q2-AH1-B54-AF4-T9-U3-G1-H1-I1-3Mtr.-K3**

Note : ● Due to continuous improvement, the specification may vary from time to time.