

## SPECIAL FEATURES

- STAINLESS STEEL CASE & STEM
- BOTTOM / BACK / EVERY ANGLE ENTRY
- OPTIONAL ~ SILICON FILLED UPTO 200°C
- STANDARD FOLLOWED EN 13190.



## APPLICATIONS

CHEMICALS / REFINERY / FERTILIZER /  
 PETROCHEMICALS / PHARMACEUTICAL / POWER /  
 CEMENT / SUGAR / FOOD & BEVERAGES / PULP &  
 PAPER & ALLIED PROCESS INDUSTRIES.

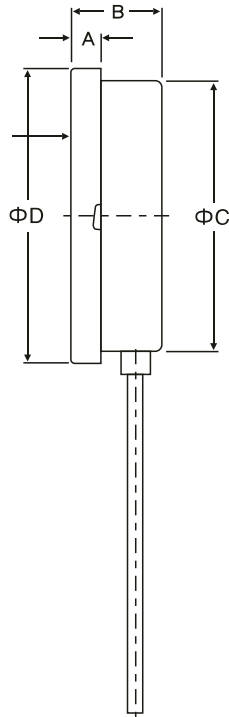
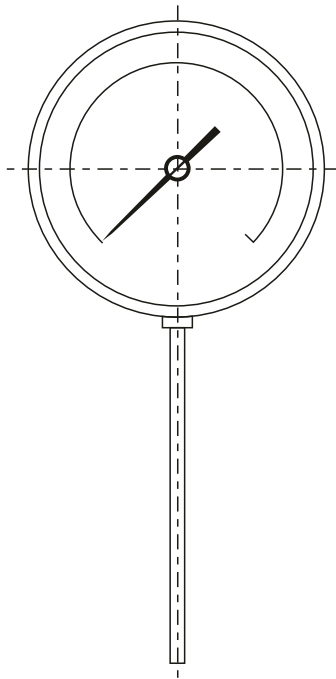
## SPECIFICATIONS

STANDARD VERSION : 63mm, 80mm, 100mm, 125mm, 150mm

Accuracy	: Class 1 as per EN 13190
Operating Pressure	: 15 kg/ cm <sup>2</sup> / (with out thermowell) maximum
Over range Limit	: 15% of full scale range or 600°C whichever is min.
Stem Diameter	: 6mm / 8mm / 9.5mm / 10mm / 12mm
Stem Length	: Refer scale table

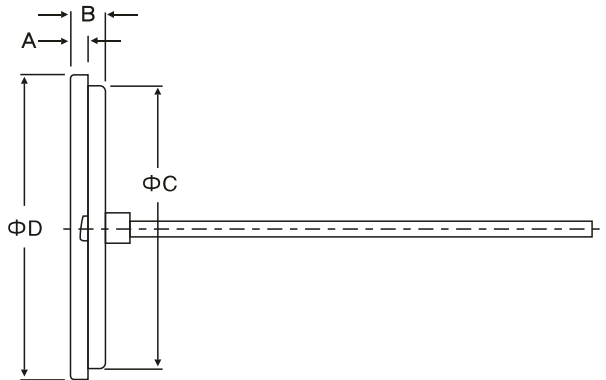
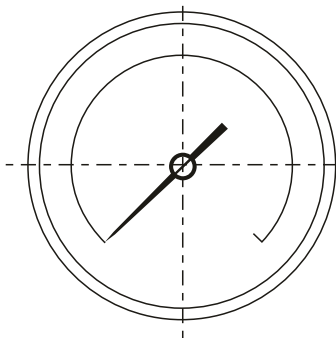
Case	: AISI 304 SS ,316SS
Ring	: AISI 304 SS, Bayonet Lock
Stem	: AISI 316 SS
Connection	: AISI 316 SS
Joints	: Tg argonarc welding
Sensing Element	: Bi- metal strip coiled

Protection	: IP65
Dial	: Aluminium, black graduation on white background
Pointer	: Aluminium, black Coloured Slotted zero adjustable (STD) Externally Zero adjustable pointer with Mounting -8 (Except nominal size 63mm) Aluminium, black Coloured Fixed Pointer for NS - 63mm
Window	: Sheet Glass
Gasket	: Neoprene



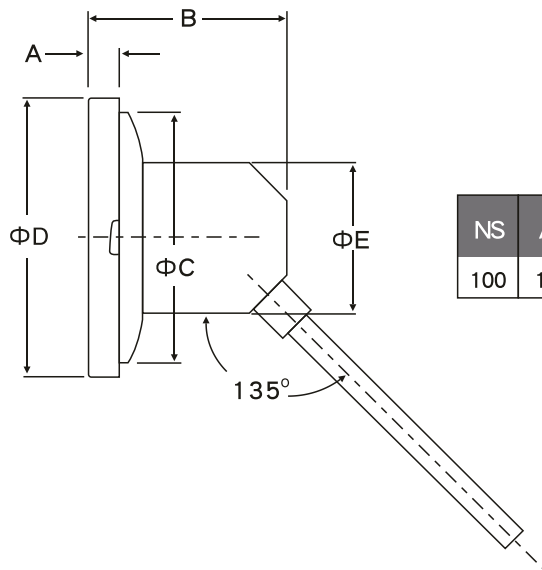
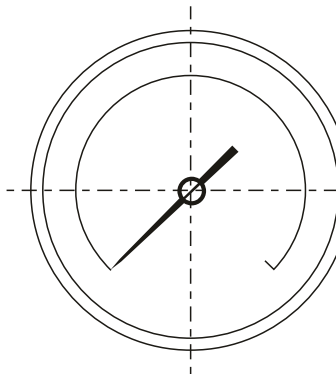
TYPE 2

NS	A	B	ΦC	ΦD
63	12.5	46	66	77.5
80	11	36	80	89.5
100	9.5	46	100	110
125	11	48	119	131
150	15	49	149	161



TYPE 4

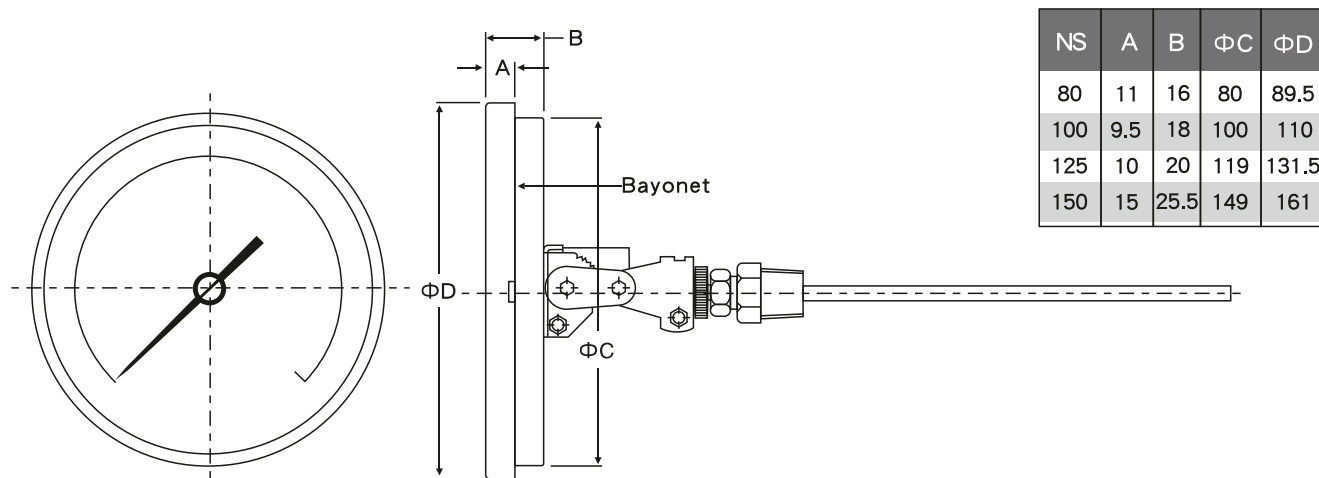
NS	A	B	ΦC	ΦD
63	12.5	16	60	69.5
80	11	16	80	89.5
100	9.5	18	100	110
125	11	20	119	131.5
150	15	25.5	149	161



TYPE 7

NS	A	B	ΦC	ΦD	ΦE
100	12	78	100	111	60

TYPE 8



Notes: • Drawings are not to scale. • All Dimensions are in mm. • NS = Nominal Size

**SCALE TABLE**

The following table indicates the minimum and maximum stem lengths in mm, per stem diameter per range. The lower values indicated are the minimum immersion length (below thread). During stem length selection, please select between the limits mentioned below.

(Range) °C	Φ 6mm.	Φ 8, 9.5 & 10mm.	Φ 12mm.
-50 / 50	65 / 500	60 / 900	55 / 1000
-50 / 100	50 / 500	40 / 900	35 / 1000
-50 / 150	40 / 500	35 / 900	30 / 1000
-30 / 220	30 / 500	25 / 900	25 / 1000
-30 / 170	40 / 500	35 / 900	35 / 1000
-30 / 120	50 / 500	40 / 900	55 / 1000
-30 / 70	65 / 500	60 / 900	55 / 1000
-30 / 50	85 / 500	60 / 900	55 / 1000
-20 / 180	40 / 500	35 / 900	30 / 1000
-20 / 100	60 / 500	50 / 900	45 / 1000
-20 / 80	65 / 500	60 / 900	55 / 1000
-20 / 60	85 / 500	60 / 900	55 / 1000
0 / 50	120 / 500	100 / 900	85 / 1000
0 / 60	100 / 500	85 / 900	80 / 1000
0 / 80	85 / 500	60 / 900	55 / 1000
0 / 100	65 / 500	60 / 900	55 / 1000
0 / 120	60 / 500	50 / 900	45 / 1000
0 / 150	50 / 500	40 / 900	35 / 1000
0 / 200	40 / 500	35 / 900	30 / 1000
0 / 250	30 / 500	25 / 900	25 / 1000
0 / 300	50 / 500	40 / 900	40 / 1000
0 / 400	40 / 500	35 / 900	35 / 1000
0 / 500	35 / 500	30 / 900	30 / 1000
0 / 600	30 / 500	25 / 900	25 / 1000

**RANGE TABLE**

Note: Mix offers National / Intern.ational Scales like C°, F° & Dual Scale in C°, F° & Scales as per the requirement can be provided on request.

Following are the example tables for °C

**STANDARD RANGE**

POSITIVE RANGE SINGLE SCALE IN°C					
0/50	0/80	0/120	0/200	0/300	0/500
0/60	0/100	0/150	0/250	0/400	0/600
COMPOUND RANGE SINGLE SCALE IN°C					
-30/50	-20/100	-30/120	-50/50		
-20/60	-20/180	-30/170	-50/100		
-20/80	-30/70	-30/220	-50/150		

Note : Other Scales are available on request.

† Refer Datasheet for complete specifications

**ACCESSORIES †**

Thermowell	See Data Sheet
------------	----------------

**HOW TO ORDER**

**BASIC MODEL**

CODE	C	J	D	E	F	BCH
NOMINAL SIZE (MM)	63	80	100	125	150	F

**TYPE OF MOUNTING**

A1 DIRECT BOTTOM ENTRY	A10 45° ANGLE MOUNTING (Only for NS100mm)	A1
A2 DIRECT CENTERBACK ENTRY	A11 EVERY ANGLEBACK ENTRY (EXCEPT NS 63mm)	

**GAUGE CONNECTION**

B20 3/8" BSP (M) *	B12 3/8" NPT (M) *	B5 1/4" BSP (M) FOR STEM DIA. 6mm ONLY	B20
B9 1/2" BSP (M) STANDARD	B13 1/2" NPT (M) STANDARD	B11 1/4" NPT (M) FOR STEM DIA. 6mm ONLY	
B15 1/2" BSPT (M)	B19 M20 X 1.5 (M)		
B14 3/8" BSPT (U) *	B27 1 1/2" TRICLOVER		

Note: Connections like PT/PF/Flaired /UNF/G/R etc. can be provided on request.

Non standard connections can be provided through adaptors.

\* Available only upto stem dia 9.5 mm

**CONNECTION TYPE**

E1 ADJUSTABLE	E2 FIXED	E1
---------------	----------	----

**STEM DIAMETER**

F1 6mm	F5 9.5mm	F4 12mm	F1
F3 8mm	F2 10mm		

**TOTAL STEM LENGTH (BELOW CASE)**

PLEASE SPECIFY IN mm (INCLUDING IMMERSION & EXTENSION LENGTH) 100

**RANGE**

REFER TABLES 100°C

**OPTIONS**

FOR NON STANDARD PRODUCTS/OPTIONAL ITEMS, PLEASE CONTACT FACTORY FOR DELIVERY AND MINIMUM QUANTITY OF ORDER.

C12 AISI316 SS CASE & BEZEL	C66 EXTERNAL ZERO ADJUSTMENT (EXCEPT NS 63mm, MOUNTING TYPE 2 & 7)	C12
C1 FIVE POINT CALIBRATION CERTIFICATE		
C5 DAMPENING LIQUID SILICON OIL(UPTO 200°C) *	C16 SHATTERPROOF GLASS/SAFETY GLASS	
C3 CUSTOM DESIGNED DIAL	C19 TOUGHENED GLASS	
	C35 DIAL TAG MARKING	
	C9 SS TAG PLATE	

\* GASKET & PLUG OF VITON / NBR

**Ordering Example:**

**BCH-F-A1-B20-E1-F1-100-100°C-C12**

Notes: • Due to continuous improvement, the specification may vary from time to time.