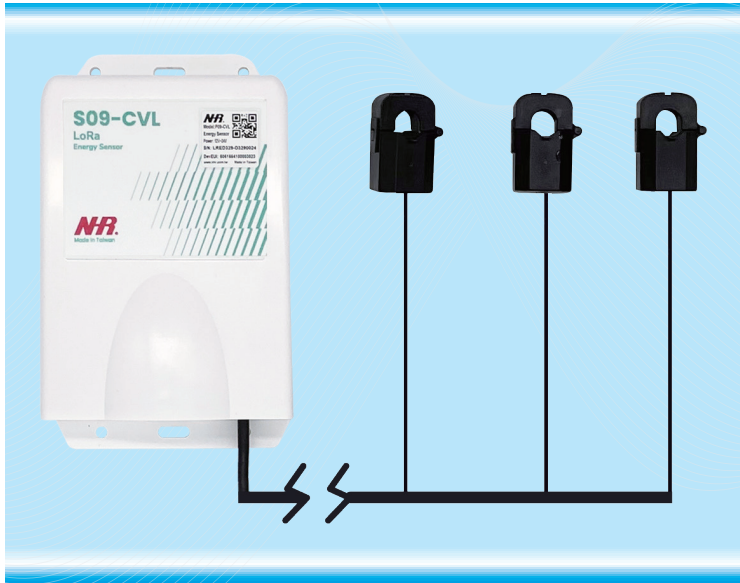


S09-CVL Energy Sensor



Features & Benefits

- Measuring three(3) electric currents at the same time
- LPWAN data report wirelessly
- Built-in antenna for ease of installation
- Weather-proof for IP67 to sustain under stringent weather
- Built-in memory for alarm out-limit setting for management(Optional)
- Firmware upgrade via BLE wireless for ease of maintenance
- Connecting to energy management system for usage optimization

Product description:

NHR S09 Series IOT Energy Meter has two features. First, it can measure energy metering data via current sensors for 3 electric lines, and then it reports the data to the IoT cloud platform through NB-IoT or LoRaWAN signal. The installer can monitor the electric current in real time through monitoring platform or mobile APP.

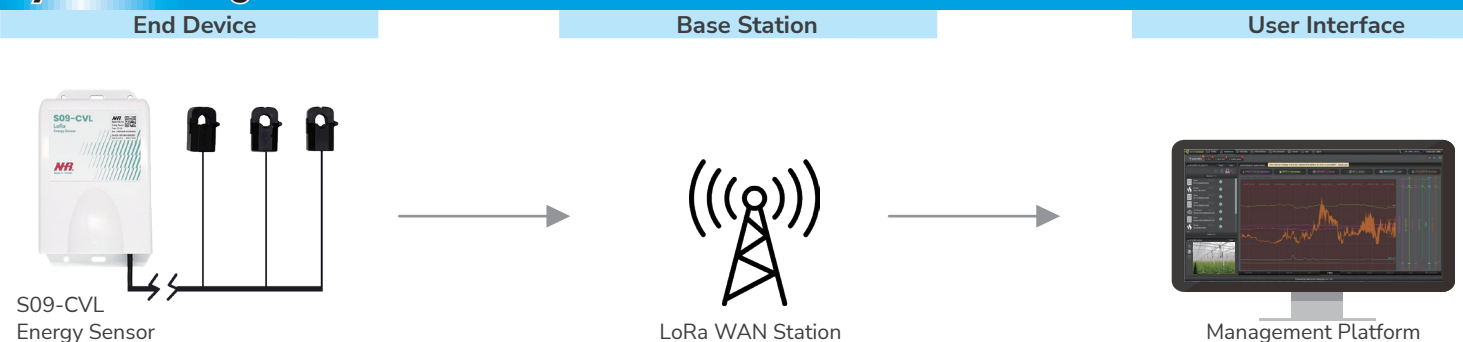
With the energy monitoring tool, the organization is able to tap into the power consumption of the separate room(s) or area(s) besides the whole floor for energy usage optimization given that the cost of energy is increasing over time. With its 3-in-1 currents measuring, the installer can easily calculate the power consumption of the focal system or devices. On top of the wireless transmission technology, it can connect to operator-grade connectivity, such as NB-IoT with SIM card built-in; or build your own cloud via LoRaWAN together with LoRaWAN gateway deployment.

Specifications

Power Input	Power Adaptor	AC 110~240V(50~60Hz)
	Power consumption	7.5W (Peak)
Sensor Clamp (3-sensor)	Order code: S09-CVL-150	150Aac, Wire-diameter Φ24, 2%
	Order code: S09-CVL-30	30Aac, Wire-diameter Φ10, 2%
	Order code: S09-CVL-10	10Aac, Wire-diameter Φ10, 2%
	Order code: S09-CVL-2	2.5Aac, Wire-diameter Φ10, 2%
Configuration	Over-the-air BLE	Configure Aac range / Report time / Out-limit
Sample Rate	500 mS one sample max	
Report Rate	Configurable: Minutes/Hour via BLE	
Alarm Out-limit	Set threshold for out-limit alarm report	
Statistics	Energy consumption statistics report (Option)	
Calibration	Calibration-free	

Cable Length	Current Sensor	2-meter(3-wire)
	Power Cord	2-meter(Optional)
Wireless Communication	LoRaWAN	868/915/923MHZ
	NB-IoT	Band-8 / Band-5 / Band-20 / Band-28
	BLE	2.4GHz
	Antenna	Built-in Antenna
Surroundings	Operating temperature	-25°C~+65°C
	Storage temperature	-30°C~+70°C
	Humidity	10°C~80% RH (Non-condensing)
Installation	Wall-mounted / Din-rail / Pole-mounted	
Dimension	Transmitter (L)11.9 X (W)3.6 X (H)18.6 cm	
Weight	Transmitter 304g	

System Configuration



Nietzsche Enterprise Co., Ltd.

Phone: +886-2-2223-1118 Fax: +886-2-2223-5333 Email: service@nhr.com.tw

4F., No.560, Sec. 2, Chung Shan Rd., Chung Ho Dist., New Taipei City 235, Taiwan

Copyright ©Nietzsche Enterprise All rights reserved.

Web: www.nhr.com.tw

V1.0